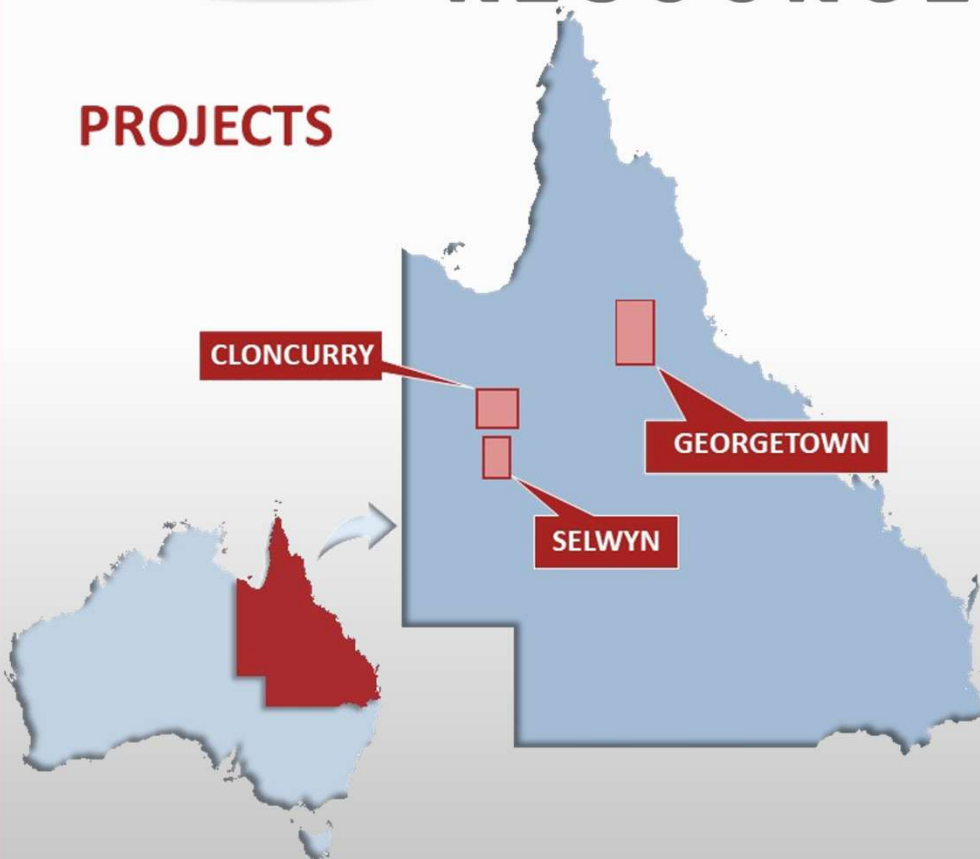




RED FOX
RESOURCES PTY LTD.

- *QLD focused mineral exploration company*
- *Experienced Board and skilled technical team*
- *Copper-Gold, high grade Gold, and Silver-Lead-Zinc projects*
- *Major Joint Venture with Evolution Mining, Cloncurry North*

PROJECTS



www.redfoxresources.net.au

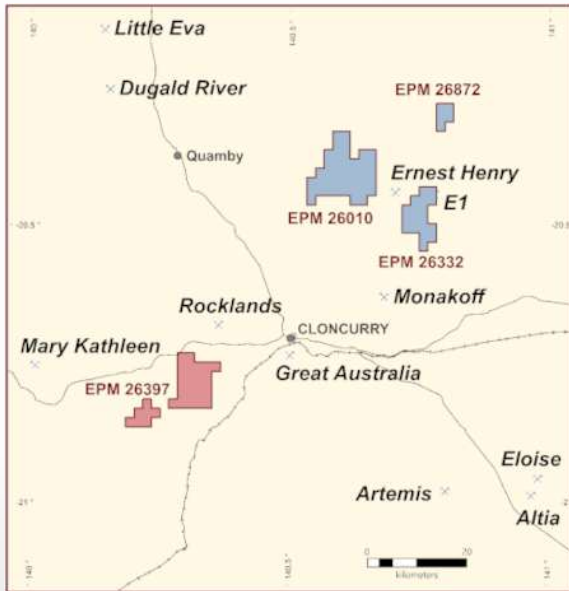
March 2026

SELWYN PROJECT

- Selwyn Project – 468 km² holding
- Highly endowed mineral district
 - Swan:** 317.7Mt @ 0.56% Cu, 0.34g/t Au*
 - Mount Dore:** 110.8Mt @ 0.55% Cu, 0.10g/t Au*
 - Osborne:** 23.5Mt @ 2.74% Cu, 1.01g/t Au*
- Cu-Co-Au-U and Pb-Zn targets
- Numerous defined prospects; prioritized
- Major Cu-Co-U prospect defined at Mt Ulo

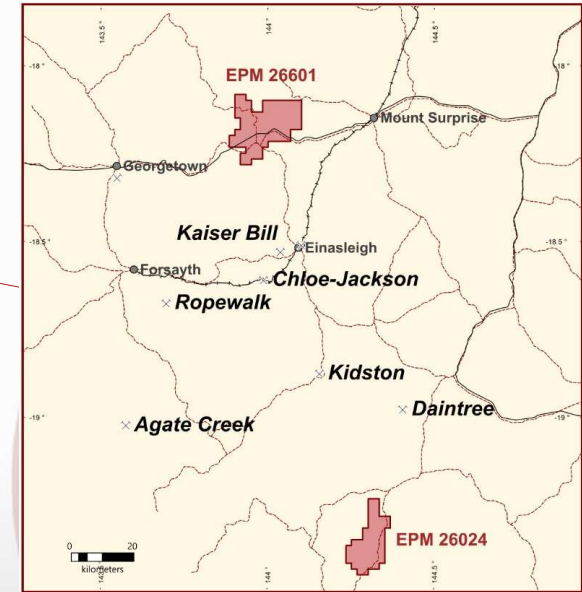
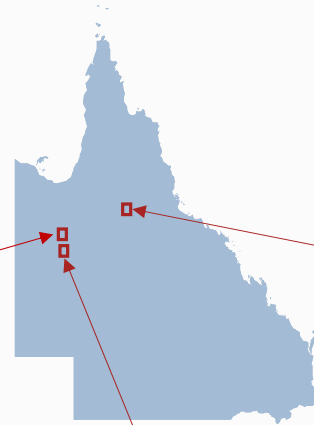
*SMI, Mineral Province Deposit Atlas

Red Fox Projects



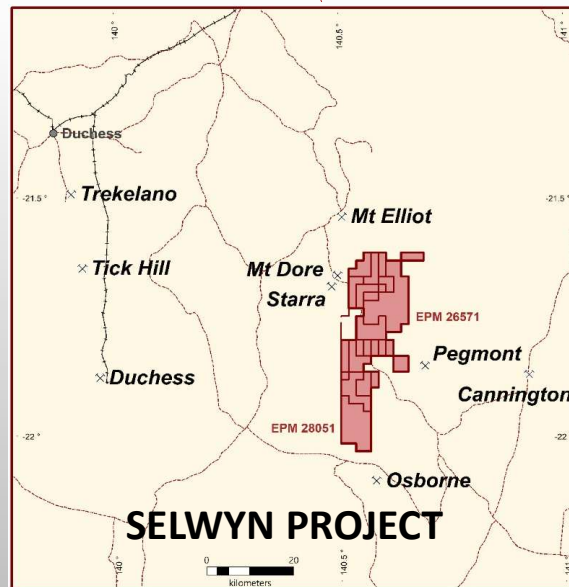
CLONCURRY PROJECTS

- Three highly mineralised districts
- Excellent infrastructure
- Major joint venture with EVN
- Drilling in progress



GEORGETOWN PROJECTS

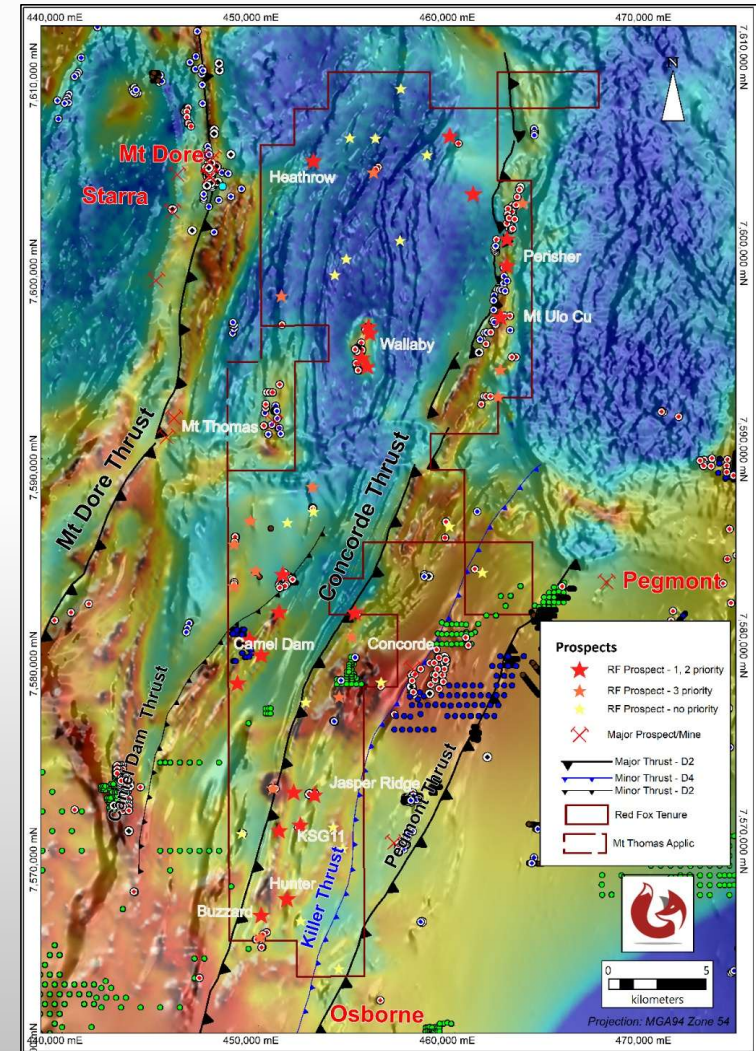
- Large tenement holding
- 15 EPMs, 1 EPM applic
- Area 1,260 km²
- 206 km² under JV, rest 100% owned



SELWYN PROJECT

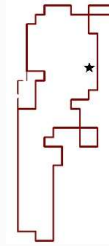
Selwyn Project (Cu-Co-Au-U and Pb-Zn targets)

- Cu-Co-Au-U and Pb-Zn targets south of Cloncurry
- 9 granted EPMs, one EPM application - total 468 km²
- 45km strike anomalous in Cu-Co-Au and Pb-Zn
- Big areas of iron enrichment and spongy gossans
- Numerous defined prospects - prioritised
- Concorde thrust - structurally similar to Mt Dore Thrust Fault system (>3Mt copper, >4.8MOz gold endowment)
- Two high priority Cu-Co targets
- IRG Gold system
- Large untested zinc anomalies
- Minimal work to refine drill targets



VTEM conductivity over magnetics, showing major prospects

Mt Ulo Prospect Cu-Co-Au



- Mt Ulo – Copper-Cobalt target
- Anomalous area of surface rock chips averaging 0.22% Cu
- Anomalous zone 880m by 270m, with copper up to 0.70% and cobalt up to 1,379ppm, uranium up to 202ppm
- Big areas of iron/manganese enrichment and spongy gossans



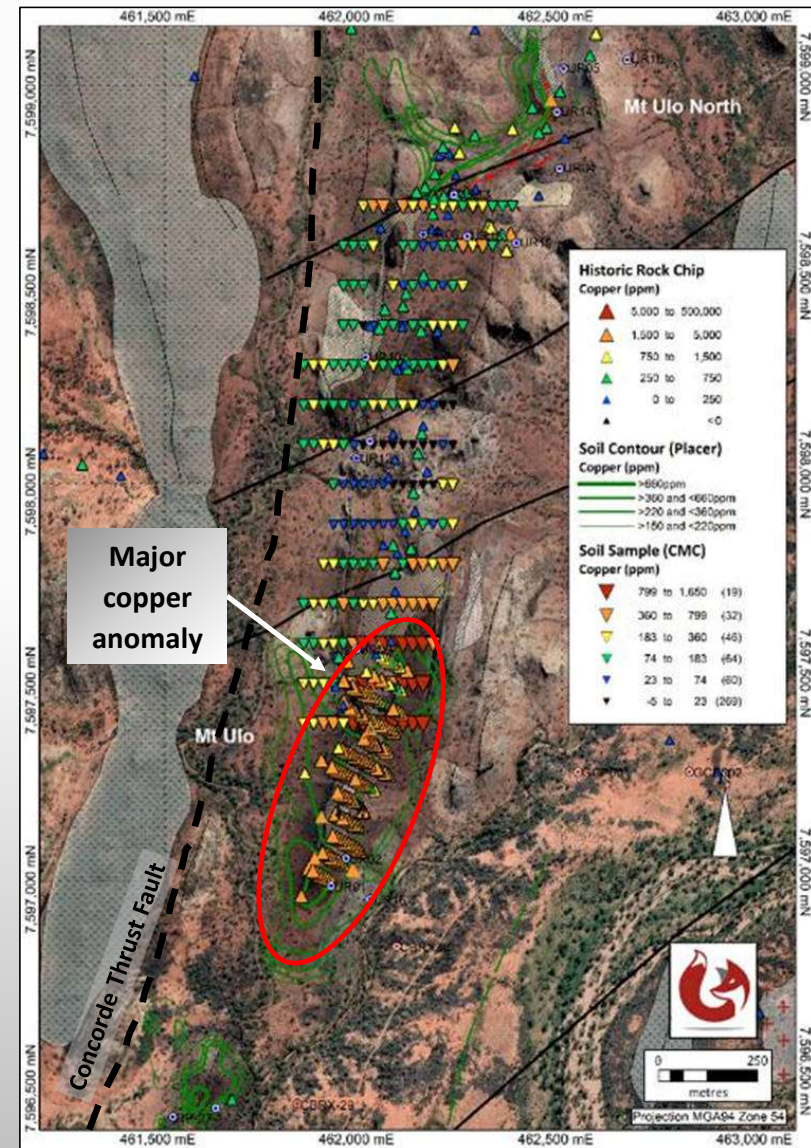
2140ppm Cu



1790ppm Cu, 235ppm Co, 1175ppm Zn



Manganese/iron rich outcrop, pad UR01



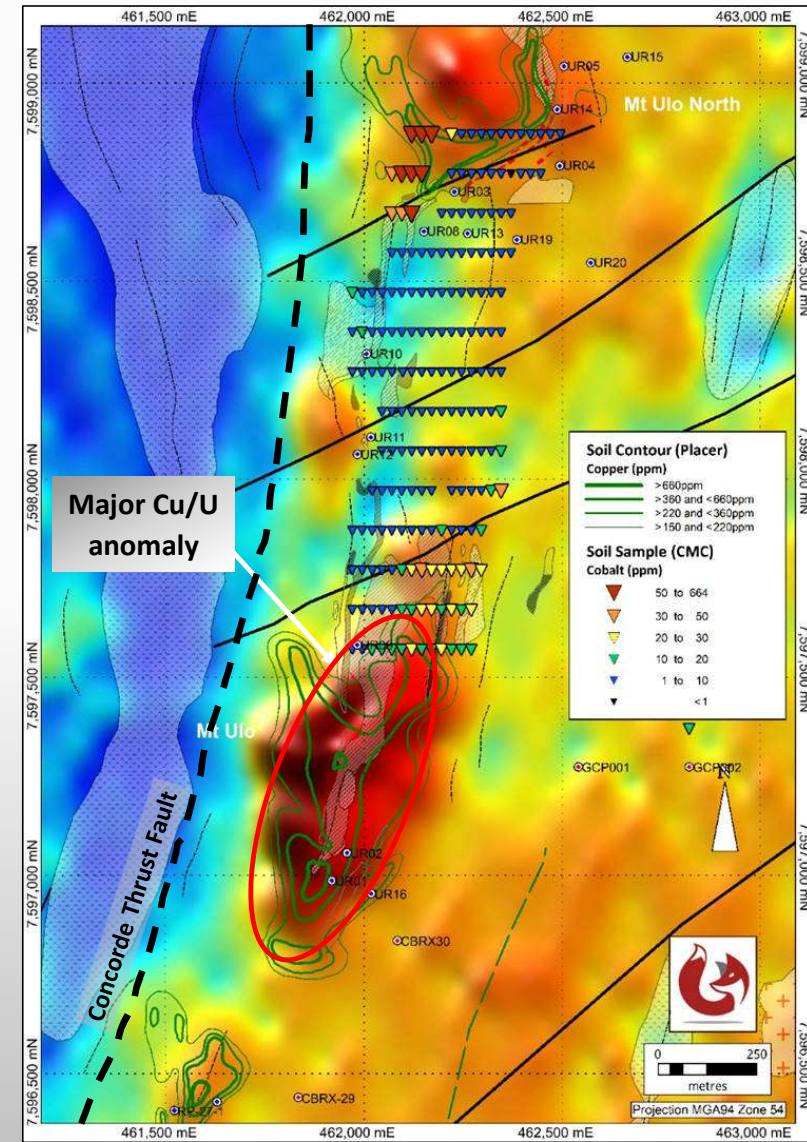
Mt Ulo Cu-Co-Au

- Coincident strong Uranium radiometric anomaly
- Coincident gravity anomaly
- Only drilling - three airtrack holes:
deepest 44m – 9m @ 0.2% Cu at EOH



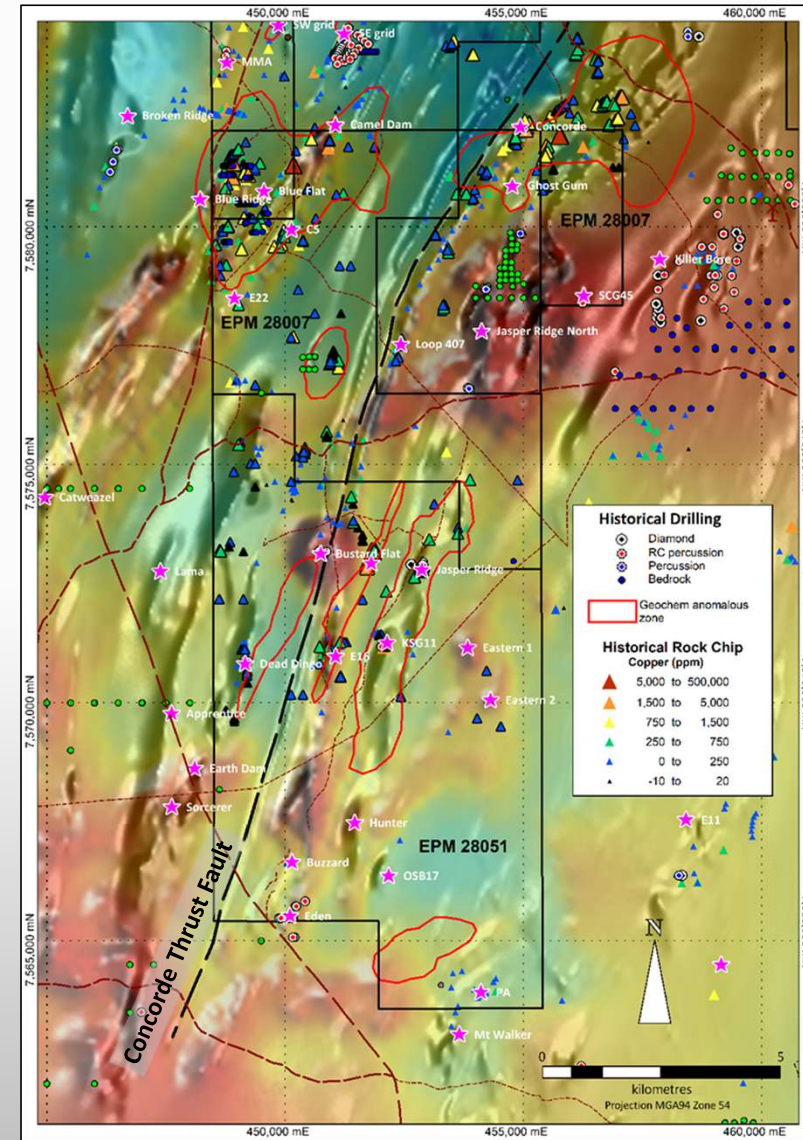
Planned early exploration programs

- Mapping/sampling to refine target and controlling structures

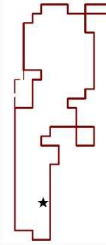


Southern Cu-Co-Au Targets

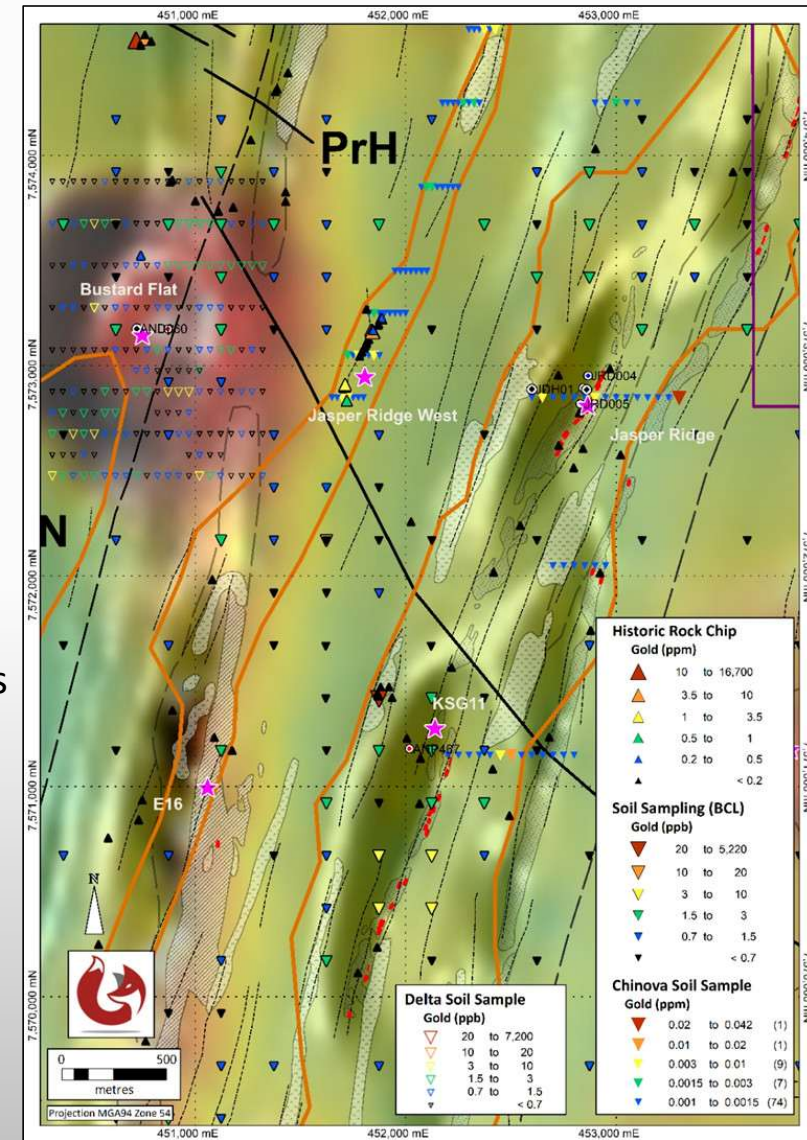
- Numerous targets associated with **Thrust faults** with limited or no depth testing
- Priority 1 targets already defined
- Geochemical anomalous zones with gossan occurrences
 - Jasper Ridge, KSG11, Jasper Ridge West
 - Camel Dam - Blue Flat
 - Concorde – Ghost Gum, Jasper Ride North, Loop 407
- EM targets (note recent EM successes by CNB and AIC in Cloncurry district)
 - Untested EM targets Hunter, Eastern 1, Eastern 2 (no geochem to date)
 - E16, Eden, Buzzard



Jasper/KSG11



- **Jasper Ridge:** 1980s Shell and CSR drilling intersected semi massive pyrite, pyrrhotite with anomalous copper (to **6.7%**), lead (to 2.5%) and zinc (to 1.5%)
- JRD-4: **18m @ 0.42% Cu**, 0.55% Zn and 252ppm Co
- JRD-6: **7.8m @ 0.97% Cu**, 0.39% Pb, 22g/t Ag and **684ppm Co**
- Maximum depth of holes 80m
- ‘Lode horizon’: host albitised quartzites and calc silicates with zones of sulphide rich (pyrrhotite) chemical sediments and irregular gossans traced over +5km, extending north & south (to KSG11)
- **Jasper Ridge West:** Rock chips to **1.93% Cu**, **5.6g/t Au** – folded or faulted repetition of Jasper Ridge? – no drilling



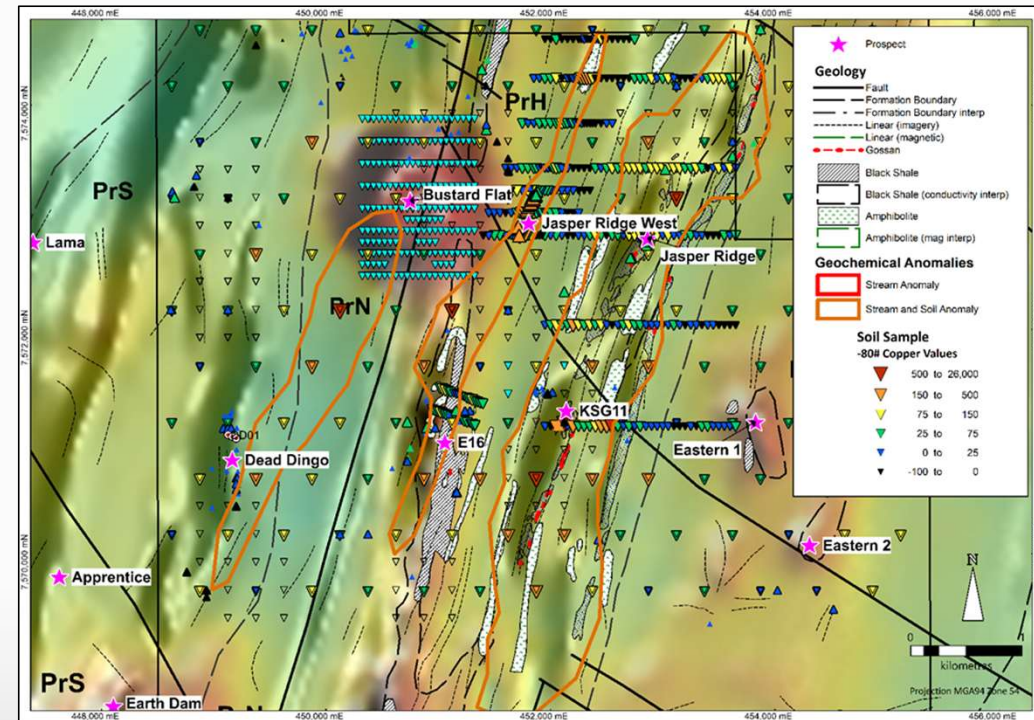
Background EM over magnetics

KSG11

- KSG11 prospect (2km south of Jasper Ridge) gossans mapped by CSR, anomalous in copper and gold.
- BHP drill tested coincident magnetic and conductivity target by single hole to 240m – not located on anomalous Geochem/gossanous zone
- Previous soil sampling wide-spread, gossan zone not intensively sampled

Planned early exploration programs

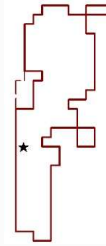
- Detailed soil sampling, rock sampling along strike
- Modelling of EM and magnetic data



Background EM over magnetics



Camel Dam Cu-Co-Au-U



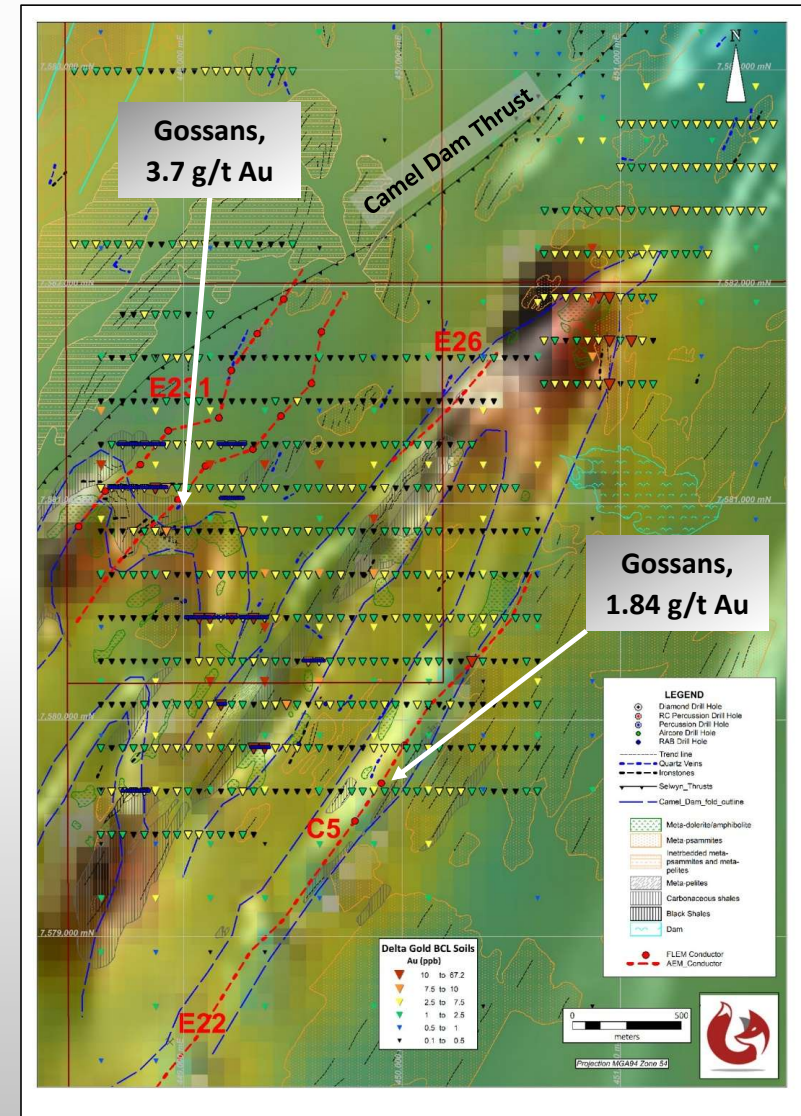
- EM anomalies associated with tightly folded sequence adjacent to **Camel Dam Thrust** (>12km strike unfolded)
- Geochemical anomalous zones with gossan occurrences
- Gold in rock chips to 3.7 and 1.84 ppm Au, associated Copper to 1830ppm Cu, Zinc to 1890ppm Zn and 539ppm Cobalt
- Anomalous zones poor outcrop, geochemistry
- Targeting AEM conductivity anomalies related to fold hinges



Gossan vicinity of 3.7ppm Au in rock chips



Gossan subcrop - vicinity of 3.7ppm Au in rock chips



Background AEM conductivity over magnetics

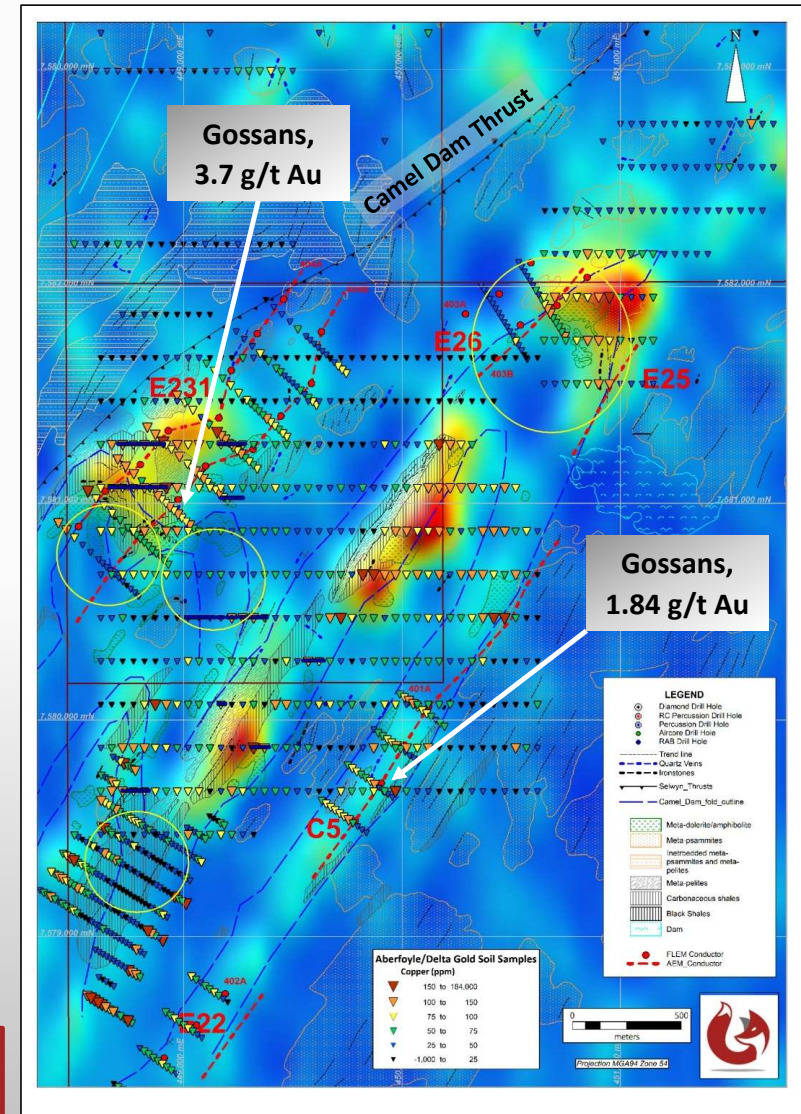
Camel Dam Cu-Co-Au-U

- Fold hinges and flanks show anomalous zones in radiometrics – uranium channel
- Previous scattered RAB drilling chasing gold anomalous zones - several zones of detectable gold, best zone 5M @ 0.83ppm Au in E231 target area
- RAB drilling max depth 16m, average 10m. – **No deep drilling**
- Ground FLEM indicates conductors at shallow depths



Planned early exploration programs

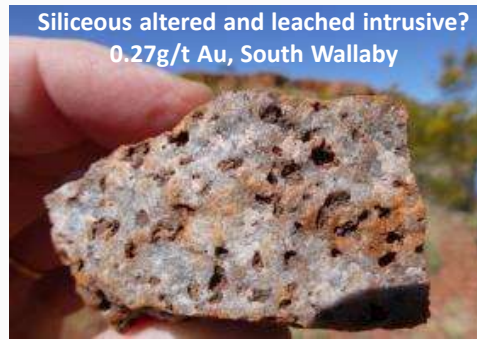
- Mapping and sampling, EM modeling (in progress) to define drill targets



Background radiometrics, Uranium² over Thorium

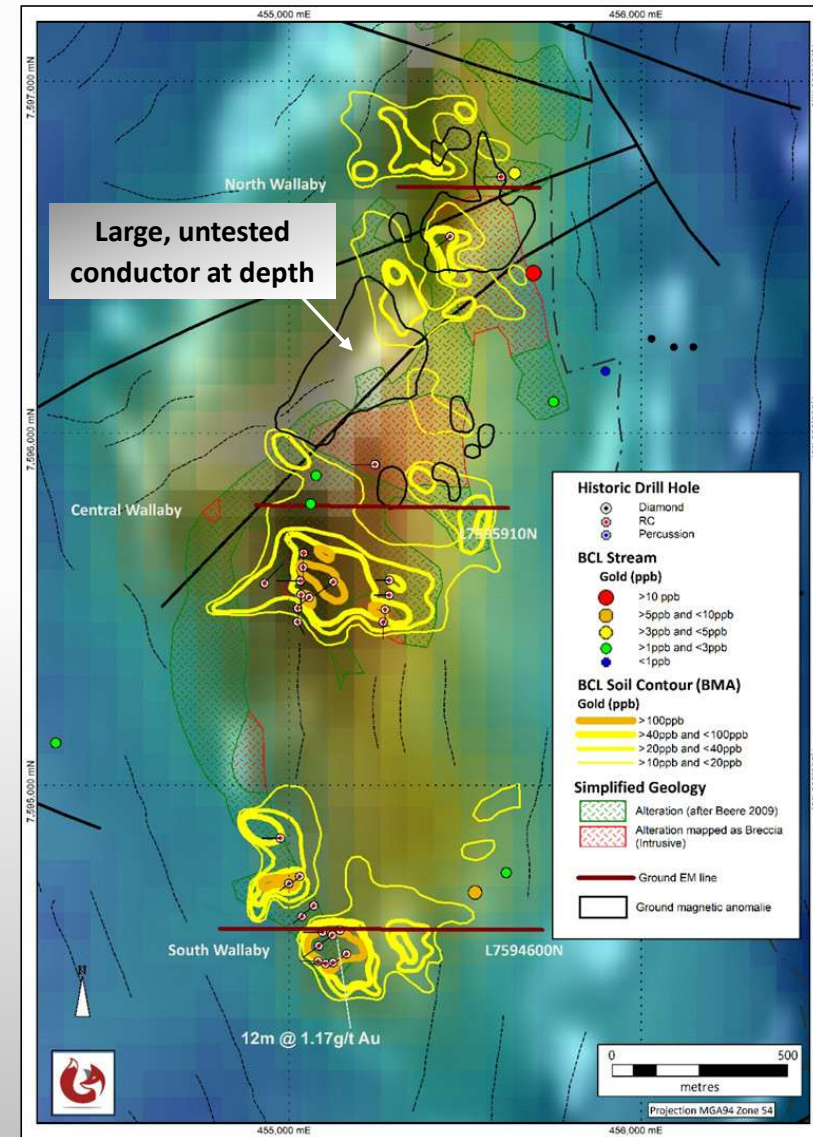
Wallaby Cu-Au

- **South Wallaby** - intersections up to **12m @ 1.17g/t Au**
 - open along strike
- Mineral tenor possibly increasing to the south - no work in area
- Deeper target - combined magnetic and EM anomaly with flanking gold soil anomalies - unexplained



Planned early exploration programs

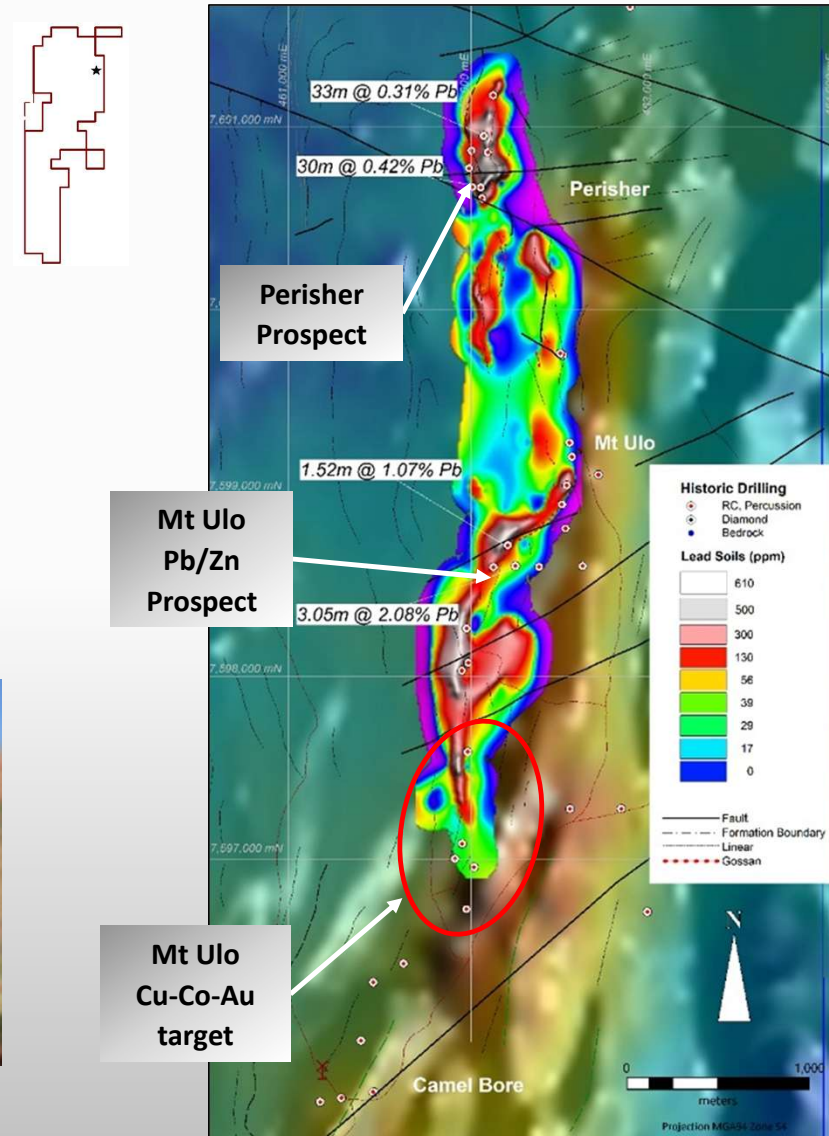
- Prospecting, mapping and sampling to connect prospects



Background EM – conductivity over magnetics

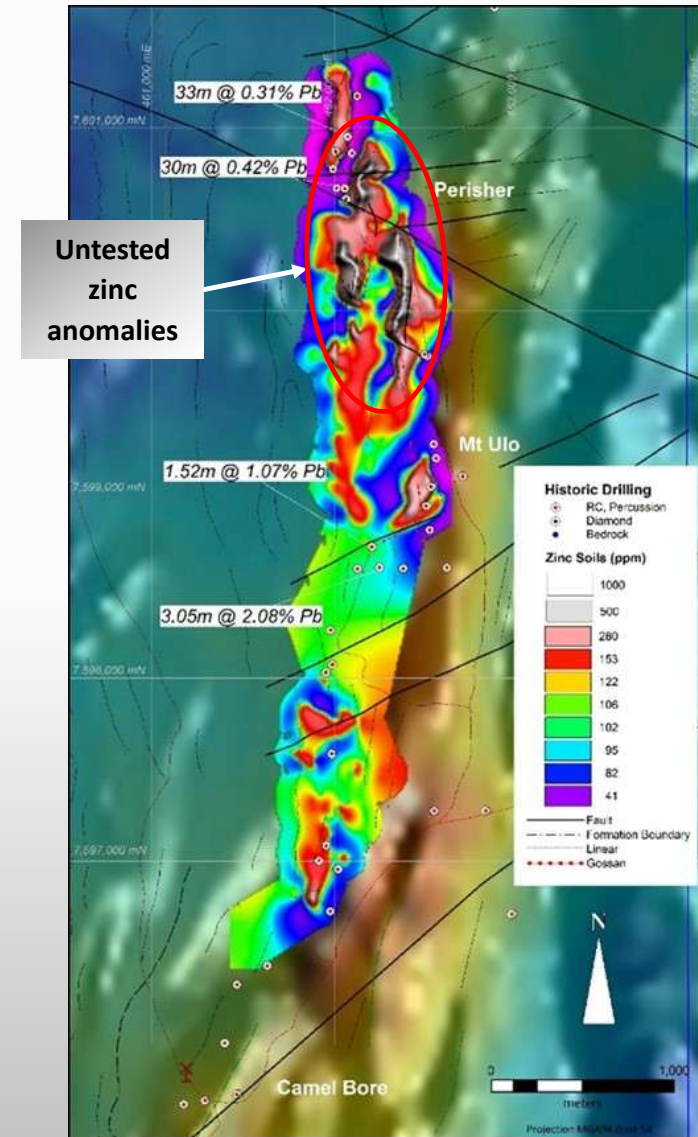
Perisher Pb-Zn

- Perisher/Mt Ulo - best intersections by shallow drilling of lead anomalies **3.05m @ 2.08% Pb, 16g/t Ag** (at 106m) including **1.75m @ 7.24% Pb+Zn**
- Perisher - wide zones of mineralisation including **30m @ 0.42% Pb, 8.6g/t Ag** (no drilling below 58m)
- Big areas of iron enrichment and spongy gossans
- Extensive untested conductors and IP anomalies



Perisher Pb-Zn

- Perisher/Mt Ulo - Zinc zones untested – walk up drill target



Planned early exploration programs

- pXRF geochemistry to confirm exact location of targets on ground
- Drilling

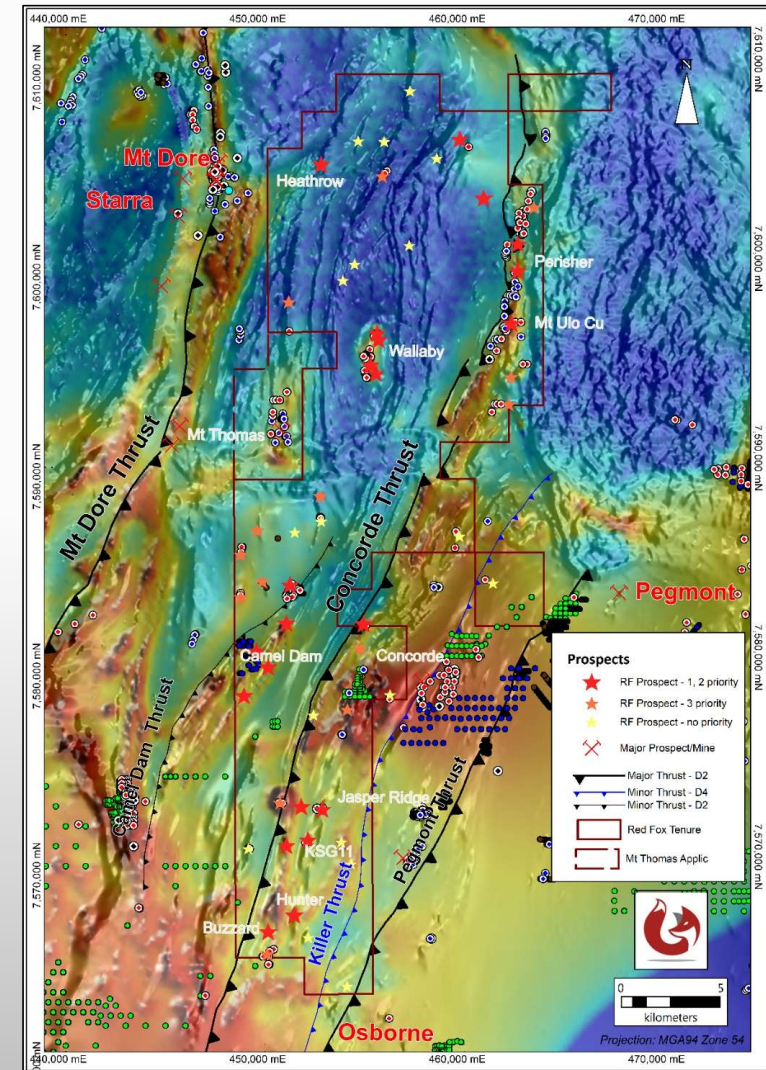
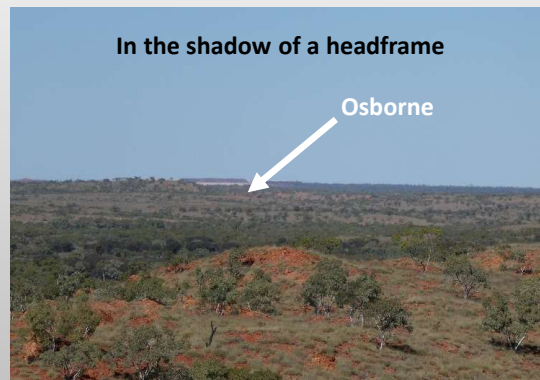
Background EM – conductivity over magnetics

Selwyn Summary



- Significant holding 468 km²
- Five defined priority one prospects
- Walk up drill targets at Perisher Prospect
- Big areas of iron enrichment and spongy gossans
- Numerous defined prospects - prioritised
- Minimal work to refine drill targets

(Cu-Co-Au and Pb-Zn targets)



VTEM conductivity over magnetics, showing major prospects

Asset Summary

Tenure	Area	Project*	Size (km ²)	Sub-blocks	Application Date	Grant Date	Expiry Date
EPM 26010	Ernest Henry West	CN JV	132	41	3 Aug 2015	10 Nov 2016	9 Nov 2026
EPM 26024	Copper Creek	G	181	56	28 Aug 2015	15 Nov 2017	14 Nov 2027
EPM 26332	Ernest Henry South	CN JV	58	18	1 Sep 2016	31 May 2018	30 May 2028
EPM 26397	Butchers Bore	C	100	31	1 Nov 2016	10 Sept 2018	9 Sept 2028
EPM 26571	Mt Carol	S	109	34	1 Jun 2017	21 Aug 2018	20 Aug 2028
EPM 26601	Eveleigh	G	303	93	3 Jul 2017	14 May 2018	13 May 2028
EPM 26872	Gipsy Creek	CN JV	16	5	9 Apr 2018	8 Nov 2018	7 Nov 2028
EPM 28006	Mt Carol West	S	22	7	2 Sept 2021	27 June 2022	26 June 2027
EPM 28007	Camel Dam	S	76	24	2 Sept 2021	28 June 2022	27 June 2027
EPM 28051	Mt Carol West 2	S	124	39	1 Oct 2021	26 July 2022	25 July 2027
EPM 18073	Selwyn East	S	57	18	Acquired 17 June 2024	19 Sep 2011	18 Sep 2030
EPM 25192	Concorde	S	19	6	Acquired 17 June 2024	16 Dec 2014	15 Dec 2026
EPM 25454	Heathrow East	S	13	4	Acquired 17 June 2024	24 Dec 2014	23 Dec 2026
EPM 25455	North Camel Dam	S	6	2	Acquired 17 June 2024	1 May 2015	30 April 2027
EPM 28993	West Mort Bore	S	16	5	12 Jan 2024	9 Oct 2025	8 October 2030
EPMa 29361	Mt Thomas	S	26	8	2 Dec 2025	Priority application	
Total			1,260				



RED FOX RESOURCES PTY LTD.

Contact: Doug Young

Phone: 0417 197 144

Email: d.young@redfoxresources.net.au

Website: www.redfoxresources.net.au

Juli Hugenholtz

0410 329 104

j.hugenholtz@redfoxresources.net.au

www.redfoxresources.net.au



www.redfoxresources.net.au

March 2026