

As well as the thrusts providing fluid conduits, the Concorde and Camel Dam Thrusts replicate the host stratigraphy of the Hampden Slates in several locations within Red Fox tenement holding, giving a strike length of 45km which is anomalous in Cu-Co-Au and Pb-Zn. The Hampden Slates are prospective because they include carbonaceous shales which are reductant lithologies providing opportunities for redox interface (with oxidising fluids) where mineralisation could be deposited.

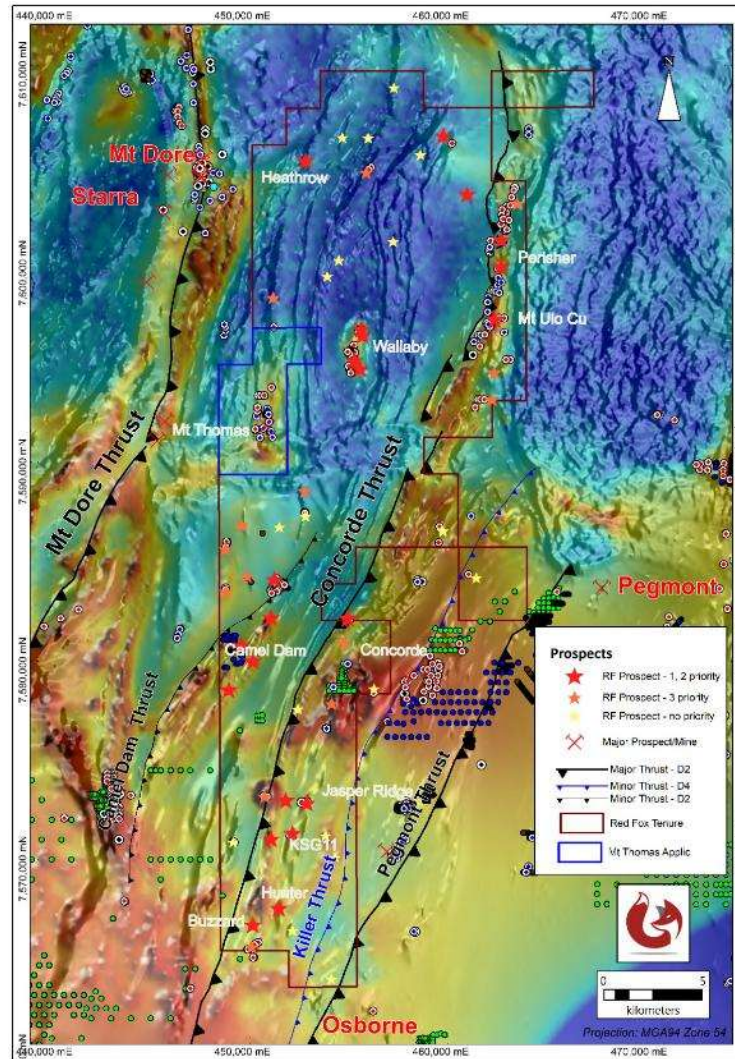


Figure 2: Location of Mt Thomas application area (blue outline) and adjacent Red Fox EPMs (maroon outline) showing Red Fox targets identified (background AEM over RTP magnetics)

Red Fox has identified the **Mt Thomas Prospect** within the Application area as being the main area of interest (see Figure 3).

The **Mt Thomas Prospect** is prospective as it has:

- Banded iron formations or ironstones (see Figure 3) associated with
- Known lead zinc mineralisation (see Figure 4)
- Significant U^2/Th anomaly in radiometrics (see Figure 5)
- Untested gravity, magnetic and conductivity anomalies

Previous exploration drilling in the Mt Thomas prospect area by Placer and Amoco has intersected:

- RP026: 24-27m 3m @ 0.26% Pb, 200ppm Zn (TD 51m)
- RP030: 42-45m 3m @ 0.22% Pb, 350ppm Zn, 0.2ppm Au (TD 51m)
- RP034: 18-21m 3m @ 0.32% Cu, 0.8g/t Au (TD 44m)

Most of the previous exploration has focussed on a strict Broken Hill (BHT) style mineralisation model targeting the lead and zinc associated with the ironstone horizon and magnetic anomalies.

Little emphasis has been made on fertile structural sites and potential copper mineralisation. Previous drilling has been shallow (generally <100m).

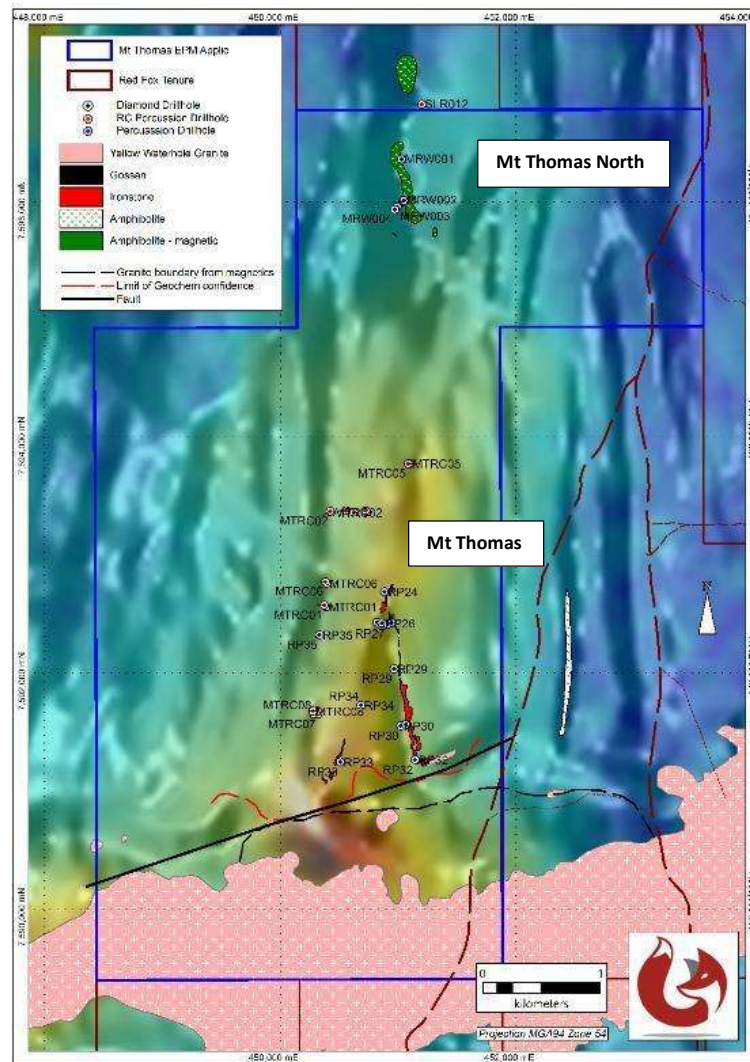


Figure 3: Mt Thomas EPM application showing iron formations and previous drilling (background AEM conductivity over RTP magnetics)

Figure 3 indicates the iron formation is folded in a synform with a likely structural target occurring in the keel of the ironstone synform. A coincident magnetic and gravity anomaly is indicated in this position at depth. This target is yet to be drill tested.

Red Fox intends to carryout 3D modelling of the magnetics and gravity data to aid drill targeting.

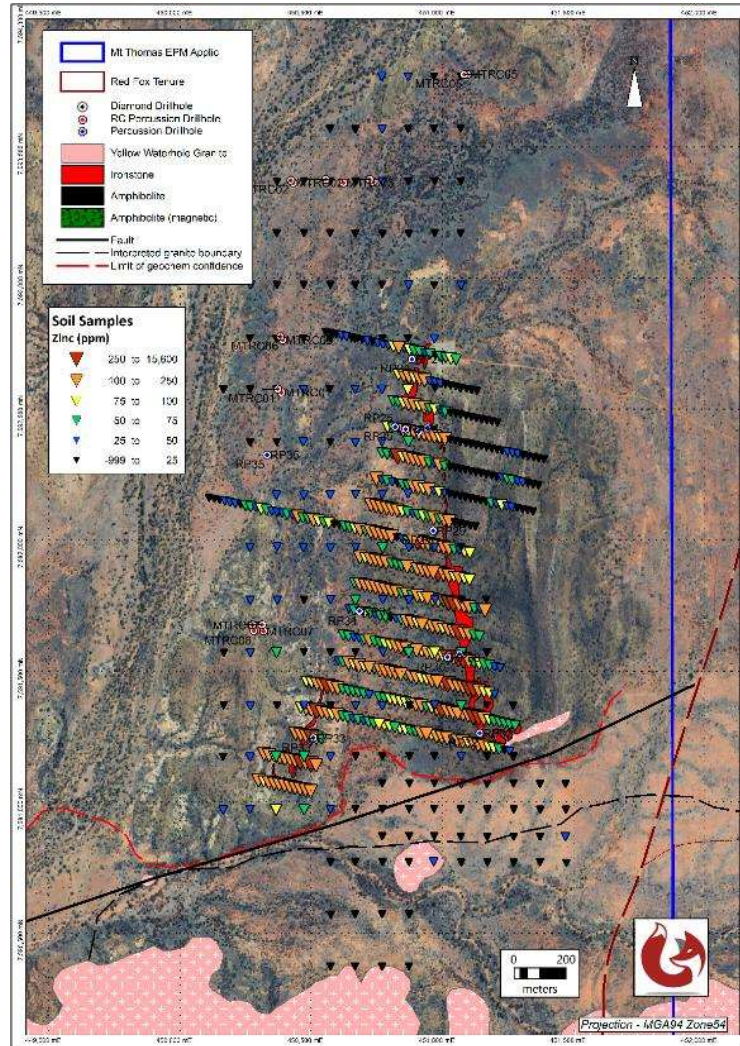


Figure 4: Mt Thomas prospect showing zinc in soil geochemistry (background Google image)

The southern end of the Mt Thomas prospect is interpreted as being faulted (clearly shown in Figures 4 and 5) with the faulting being possibly related to the intrusion of the Yellow Waterhole Granite (Figure 4).

It is also clear from Figure 4 that there is a break in outcrop at the fault which limits the confidence in soil geochemistry south of the line (red) indicated. In Figure 4, the Google image shows that the area south of the fault is poorly outcropping and underlain by transported alluvial sediments suggesting that soil geochemistry is unlikely to respond to bedrock mineralisation through the cover. This is confirmed by the lack of zinc anomalies south of the line (see Figure 4).

Figure 5 shows strong copper geochemistry in soils north of the fault associated with the iron formation but no significant copper south of the fault. The anomalous zinc and copper in soils correlates with a **very significant U²/Th anomaly** (high uranium) in radiometric data. High U²/Th anomalies are also apparent over the highly endowed Mt Dore Thrust further to the west (host to significant copper and gold occurrences at Starra, Mt Dore, Merlin and Swan).

Importantly, Figure 3 also shows a large AEM anomaly lying south of the fault close to the contact or within the granite. This may indicate skarn remobilisation by the granite of the sulphides associated with the western ironstone and is an attractive target for follow up geophysical surveys.

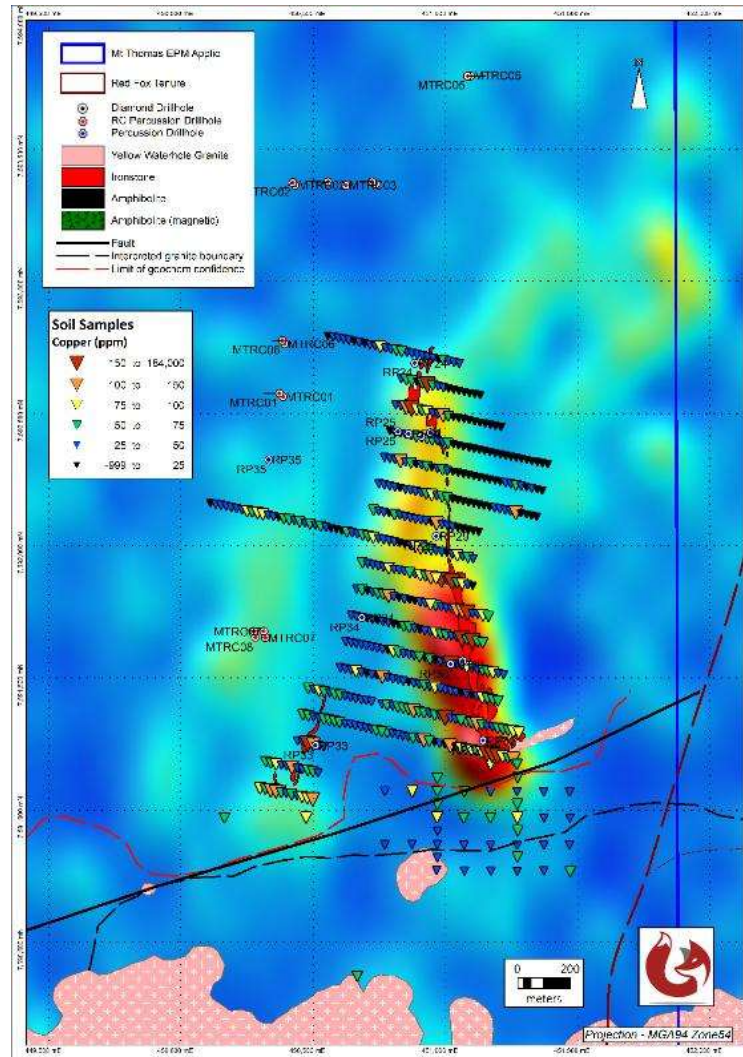


Figure 5: Mt Thomas prospect showing copper in soil geochemistry (background U^2/Th)

While no significant assays were returned by previous workers at Mt Thomas North prospect, Red Fox will further review this prospect in light of targets developed at Mt Thomas.

Red Fox is further reviewing the information prior to a field inspection once the EPM is granted.

About Red Fox Resources

Red Fox Resources is a private mineral exploration company and project generator that was founded on a strategy to acquire **high-quality, advanced exploration targets** with the potential to rapidly add value. It is focused on exploration for large copper, gold and zinc deposits, with fifteen wholly owned, granted tenements located in the highly mineralised Georgetown, Cloncurry and Selwyn districts of north Queensland. The company holds three EPMs in the Ernest Henry area targeting IOCG style copper/gold deposits, now under joint venture with Evolution Mining. Red Fox also has an additional EPM in the Cloncurry district targeting high grade gold and nine EPMs in the Selwyn district targeting IOCG and Pb-Zn-Ag deposits. Further information about the company and its projects is available at: <http://www.redfoxresources.net.au/>

Competent Persons Statement – Exploration Results: The information in this document that relates to Exploration Results is based on and fairly represents information and supporting documentation compiled by Mr Douglas Young, a Competent Person who is a Fellow of The Australian Institute of Geoscientists and a Registered Professional Geoscientist (RPGeo – Mineral Exploration). Mr Young is Chairman of the Board of Directors, is an employee of Red Fox Resources Pty Ltd and is a substantial shareholder of the Company.

Mr Young has sufficient experience relevant to the style of mineralisation and type of deposit under consideration and to the activity being undertaking to qualify as a Competent Person as defined in the 2012 Edition of the ‘Australasian Code for Reporting of Exploration Results, Mineral Resources and Ore Reserves’. Mr Young consents to the inclusion in the report of the matters based on this information and the Company confirms that the form and context in which the Competent Person’s findings are presented have not been materially modified from the earlier announcements, all of which are available to view on www.redfoxresources.net.au.

APPENDIX 1

JORC Code, 2012 Edition – Table 1

16 March 2026

Section 1 Sampling Techniques and Data

(Criteria in this section apply to all succeeding sections.)

Criteria	JORC Code explanation	Commentary
Sampling techniques	<ul style="list-style-type: none"> Nature and quality of sampling (e.g. cut channels, random chips, or specific specialised industry standard measurement tools appropriate to the minerals under investigation, such as down hole gamma sondes, or handheld XRF instruments, etc). These examples should not be taken as limiting the broad meaning of sampling. Include reference to measures taken to ensure sample representivity and the appropriate calibration of any measurement tools or systems used. Aspects of the determination of mineralisation that are Material to the Public Report. In cases where ‘industry standard’ work has been done this would be relatively simple (e.g. ‘reverse circulation drilling was used to obtain 1 m samples from which 3 kg was pulverised to produce a 30 g charge for fire assay’). In other cases, more explanation may be required, such as where there is coarse gold that has inherent sampling problems. Unusual commodities or mineralisation types (e.g. submarine nodules) may warrant disclosure of detailed information. 	<ul style="list-style-type: none"> No new information
Drilling techniques	<ul style="list-style-type: none"> Drill type (e.g. core, reverse circulation, open-hole hammer, rotary air blast, auger, Bangka, sonic, etc) and details (e.g. core diameter, triple or standard tube, depth of diamond tails, face-sampling bit or other type, whether core is oriented and if so, by what method, etc). 	<ul style="list-style-type: none"> No new information
Drill sample recovery	<ul style="list-style-type: none"> Method of recording and assessing core and chip sample recoveries and results assessed. Measures taken to maximise sample recovery and ensure representative nature of the samples. 	<ul style="list-style-type: none"> No new information

Criteria	JORC Code explanation	Commentary
	<ul style="list-style-type: none"> Whether a relationship exists between sample recovery and grade and whether sample bias may have occurred due to preferential loss/gain of fine/coarse material. 	
Logging	<ul style="list-style-type: none"> Whether core and chip samples have been geologically and geotechnically logged to a level of detail to support appropriate Mineral Resource estimation, mining studies and metallurgical studies. Whether logging is qualitative or quantitative in nature. Core (or costean, channel, etc) photography. The total length and percentage of the relevant intersections logged. 	<ul style="list-style-type: none"> No new information
Sub-sampling techniques and sample preparation	<ul style="list-style-type: none"> If core, whether cut or sawn and whether quarter, half or all core taken. If non-core, whether riffled, tube sampled, rotary split, etc and whether sampled wet or dry. For all sample types, the nature, quality and appropriateness of the sample preparation technique. Quality control procedures adopted for all sub-sampling stages to maximise representivity of samples. Measures taken to ensure that the sampling is representative of the in situ material collected, including for instance results for field duplicate/second-half sampling. Whether sample sizes are appropriate to the grain size of the material being sampled. 	<ul style="list-style-type: none"> No new information
Quality of assay data and laboratory tests	<ul style="list-style-type: none"> The nature, quality and appropriateness of the assaying and laboratory procedures used and whether the technique is considered partial or total. For geophysical tools, spectrometers, handheld XRF instruments, etc, the parameters used in determining the analysis including instrument make and model, reading times, calibrations factors applied and their derivation, etc. Nature of quality control procedures adopted (e.g. standards, blanks, duplicates, external laboratory checks) and whether acceptable levels of accuracy (i.e. lack of bias) and precision have been established. 	<ul style="list-style-type: none"> No new information
Verification of sampling and assaying	<ul style="list-style-type: none"> The verification of significant intersections by either independent or alternative company personnel. The use of twinned holes. Documentation of primary data, data entry procedures, data verification, data storage (physical and electronic) protocols. Discuss any adjustment to assay data. 	<ul style="list-style-type: none"> No new information

Criteria	JORC Code explanation	Commentary
Location of data points	<ul style="list-style-type: none"> Accuracy and quality of surveys used to locate drill holes (collar and down-hole surveys), trenches, mine workings and other locations used in Mineral Resource estimation. Specification of the grid system used. Quality and adequacy of topographic control. 	<ul style="list-style-type: none"> No new information
Data spacing and distribution	<ul style="list-style-type: none"> Data spacing for reporting of Exploration Results. Whether the data spacing and distribution is sufficient to establish the degree of geological and grade continuity appropriate for the Mineral Resource and Ore Reserve estimation procedure(s) and classifications applied. Whether sample compositing has been applied. 	<ul style="list-style-type: none"> No new information
Orientation of data in relation to geological structure	<ul style="list-style-type: none"> Whether the orientation of sampling achieves unbiased sampling of possible structures and the extent to which this is known, considering the deposit type. If the relationship between the drilling orientation and the orientation of key mineralised structures is considered to have introduced a sampling bias, this should be assessed and reported if material. 	<ul style="list-style-type: none"> No new information
Sample security	<ul style="list-style-type: none"> The measures taken to ensure sample security. 	<ul style="list-style-type: none"> No new information
Audits or reviews	<ul style="list-style-type: none"> The results of any audits or reviews of sampling techniques and data. 	<ul style="list-style-type: none"> No new information

Section 2 Reporting of Exploration Results

(Criteria listed in the preceding section also apply to this section.)

Criteria	JORC Code explanation	Commentary
Mineral tenement and land tenure status	<ul style="list-style-type: none"> Type, reference name/number, location and ownership including agreements or material issues with third parties such as joint ventures, partnerships, overriding royalties, native title interests, historical sites, wilderness or national park and environmental settings. The security of the tenure held at the time of reporting along with any known impediments to obtaining a licence to operate in the area. 	<ul style="list-style-type: none"> Red Fox Selwyn Project area consists of nine contiguous EPMs located in the Selwyn district. The previous work referred to in this release is located on new application area EPMa 29361. Exploration Permit for Minerals application (EPMa) 29361 “Mt Thomas” was applied for on 2 December 2025. The application was competitive. Red Fox was advised on 13 March 2026 by Department of Natural Resources and Mines, Manufacturing and Regional and Rural Development that it had been awarded priority applicant. The application will now proceed to grant to Red Fox. The EPM areas are partly covered by Native Title claim application QUD189/2010, determined QCD2014/008, held by the Yulluna Aboriginal Corporation RNTBC. Red Fox Resources has entered into an Ancillary Agreement with the Yulluna in relation to EPM 26571 which has been varied to include other Selwyn Project EPMs.

Criteria	JORC Code explanation	Commentary
Exploration done by other parties	<ul style="list-style-type: none"> <i>Acknowledgment and appraisal of exploration by other parties.</i> 	<ul style="list-style-type: none"> A total of fourteen EPMs have previously been held over portions of EPM 29361. Significant work was completed by: <ul style="list-style-type: none"> Sandfire Resources NL 2018 under EPM 25854 – principally geophysical interpretation/modeling and ground geophysics (gravity), minor rock chip sampling, no drilling (cr121197, cr115156, cr109397). Pegmont 2011 under EPM 17053 – principally interpretation of aeromagnetics – geophysical interpretation and ground inspection, some geochemical sampling, 4 RC percussion drill holes on Mt Thomas North prospect (SC7) see Table 2 (cr076295, cr066614). Chinova 1998-1987 under EPM 10783 – single RC percussion drill hole to test north trending magnetic anomaly, western limb Mt Thomas prospect (cr030633). Placer 1996 under EPM 9644 – geological mapping, ground magnetics, Sirotem surveys 8 percussion drill holes (all targeting western limb magnetic targets), Mt Thomas prospect see Table 3 (cr028275). Amoco 1978 under EPM 1824 – geological mapping, hand auger soils, ground magnetics, 12 percussion holes (airtrack open hole) Mt Thomas prospect (cr011215 and cr006441). Kuridala and Soldiers Cap open range AEM surveys by BHP 1996. Aeromagnetic data was collected and gridded by GSQ in 2018, survey 1370. Aeromagnetic survey collected by MIM 1992 survey 1122.
Geology	<ul style="list-style-type: none"> <i>Deposit type, geological setting and style of mineralisation.</i> 	<ul style="list-style-type: none"> The geology of EPM 29361 consists of mid-Proterozoic basement partly obscured by shallow Mesozoic and Cainozoic sediments of the Eromanga and Carpentaria basins. Red Fox is targeting copper-gold and lead-zinc-silver mineralization within the Proterozoic basement, which is part of the Eastern Succession of the Mount Isa block. Basement outcrops within the tenements are considered to be New Hope Sandstone, Starcross Formation and Hampden Slate all considered part of the Kuridala Group (1710 - 1650Ma).

Criteria	JORC Code explanation	Commentary
		<ul style="list-style-type: none"> Intrusions into this sequence consist of the Yellow Waterhole Granite and numerous smaller stocks (1505 ± 5 Ma). The intrusions form part of the Williams Supersuite, which is thought to be a major driver of mineralization within the region. The largest nearby Cu-Au deposit is Ernest Henry, where copper and gold mineralization occurs within a matrix supported magnetite-carbonate-sulphide breccia. Prior to mining, the resource consisted of 166Mt @ 1.1% Cu and 0.54 g/t Au (Ryan, 1998). Other significant deposits in the Selwyn district are Mt Dore Cu/Au (111Mt @ 0.55% Cu, 0.1g/t Au) Mt Elliott/Swan 354Mt @ 0.60% Cu, 0.36g/t Au and the Starra deposits (13Mt @ 1% Cu, 0.86g/t Au) – NW Mineral Province Atlas Ch3 and 4, 2019. The nearest Cu-Au deposit is Osborne (23.5Mt @ 2.74% Cu, 1g/t Au and anomalous Co) which lies 20km south of the application areas. It is a structurally controlled epigenetic deposit related to magmatic fluids – NW Mineral Province Atlas Ch 6, 2019. The largest nearby Pb-Zn-Ag deposit is Cannington, a Broken Hill style deposit (Historical production 4.3Mt lead @ 8% Pb, 1.2Mt zinc @ 2.2% Zn, 619MOz silver at 355g/t Ag – NW Mineral Province Atlas 2019) and the unmined Pegmont deposit – 14Mt @ 5.7% Pb, 2.7% Zn, 9g/t Ag – NW Mineral Province Atlas 2019.
Drill hole Information	<ul style="list-style-type: none"> A summary of all information material to the understanding of the exploration results including a tabulation of the following information for all Material drill holes: <ul style="list-style-type: none"> easting and northing of the drill hole collar elevation or RL (Reduced Level – elevation above sea level in metres) of the drill hole collar dip and azimuth of the hole down hole length and interception depth hole length. If the exclusion of this information is justified on the basis that the information is not Material and this exclusion does not detract from the understanding of the report, the Competent Person should clearly explain why this is the case. 	<ul style="list-style-type: none"> Refer Table 2 and 3 below for previous drill hole details for Mt Thomas North prospect and Mt Thomas prospect respectively. Note no field checking of locations by Red Fox Resources has been done to date to verify the locations of the drillholes. Drilling by Pegmont and Placer utilized reverse circulation percussion drilling techniques and sampling was carried out on a 1m interval basis. Drilling by Amoco utilized air track percussion drill rigs which were likely open hole percussion techniques. Sampling was carried out on a 3m interval basis (10 feet). Drill hole collar locations have not been field checked by Red Fox.

Criteria	JORC Code explanation	Commentary
Data aggregation methods	<ul style="list-style-type: none"> In reporting Exploration Results, weighting averaging techniques, maximum and/or minimum grade truncations (eg cutting of high grades) and cut-off grades are usually Material and should be stated. Where aggregate intercepts incorporate short lengths of high grade results and longer lengths of low grade results, the procedure used for such aggregation should be stated and some typical examples of such aggregations should be shown in detail. The assumptions used for any reporting of metal equivalent values should be clearly stated. 	<ul style="list-style-type: none"> RC drilling by Pegmont and Placer were sampled on a 1m interval basis Air track drilling by Amoco were sampled on a 3m basis (10 foot) The reported average intersections may be length weighted with assayed intervals of various lengths. No grade truncations used. Metal equivalence is not used in this report.
Relationship between mineralisation widths and intercept lengths	<ul style="list-style-type: none"> These relationships are particularly important in the reporting of Exploration Results. If the geometry of the mineralisation with respect to the drill hole angle is known, its nature should be reported. If it is not known and only the down hole lengths are reported, there should be a clear statement to this effect (eg 'down hole length, true width not known'). 	<ul style="list-style-type: none"> Results are reported as down hole length. True widths are not known as there is insufficient information on the attitude of the geological units in the area.
Diagrams	<ul style="list-style-type: none"> Appropriate maps and sections (with scales) and tabulations of intercepts should be included for any significant discovery being reported. These should include, but not be limited to a plan view of drill hole collar locations and appropriate sectional views. 	<ul style="list-style-type: none"> See body of report for drill hole location maps (Figures 1 - 5).
Balanced reporting	<ul style="list-style-type: none"> Where comprehensive reporting of all Exploration Results is not practicable, representative reporting of both low and high grades and/or widths should be practiced to avoid misleading reporting of Exploration Results. 	<ul style="list-style-type: none"> Exploration Results reported are representative of all assay results.
Other substantive exploration data	<ul style="list-style-type: none"> Other exploration data, if meaningful and material, should be reported including (but not limited to): geological observations; geophysical survey results; geochemical survey results; bulk samples – size and method of treatment; metallurgical test results; bulk density, groundwater, geotechnical and rock characteristics; potential deleterious or contaminating substances. 	<ul style="list-style-type: none"> Soil geochemistry <ul style="list-style-type: none"> Amoco soil sampling (cr006441) by hand auger and vacuum auger to depths of 0.3 to 1.7m, analyses for Cu, Pb, Zn, Ag and Co by Tetchem, Cairns (silver values were compromised by auger contamination). Geochem effectively outlined the prospective horizon. Rock chip geochemistry – some rock chip geochemistry has been carried out by previous explorers to assist drill targeting but not referred to herein.

Criteria	JORC Code explanation	Commentary
		<ul style="list-style-type: none"> Geophysics – ground magnetics, minor gravity and Sirotem surveys have been carried out by previous explorers to assist their drill targeting. This data has mostly been superseded by more modern aerial surveys reported above.
Further work	<ul style="list-style-type: none"> The nature and scale of planned further work (eg tests for lateral extensions or depth extensions or large-scale step-out drilling). Diagrams clearly highlighting the areas of possible extensions, including the main geological interpretations and future drilling areas, provided this information is not commercially sensitive. 	<ul style="list-style-type: none"> Further work on the prospects within the tenure would initially involve field inspection to validate locations, hole collars, etc, and to plan future exploration programs. Follow up work on the key prospects would likely involve further mapping and soil and rock geochemistry to detail the prospect areas. This work would also include a geophysical review and 3D modeling of the data geophysical data for each prospect and follow-up ground geophysical surveys.

Table 2: Previous Drill holes – Mt Thomas North Prospect (SC7 or Mort River West prospect) (*Locations and survey information estimated by Red Fox from plans, no locations, surveys, sections or drill logs provided)

Hole ID	Company / Year	East MGA94	North MGA94	Prospect	Dip	Azimuth	Depth (m)	Reference	Comments
MRW001	Pegmont 2010	451,027	7,596,361	SC7	-50?	270	90	CR 076295 CR 066614	Drilled to test surface rock chips up to 2.95ppm Au. No significant intersections, small pyritic zones recorded.
MRW002	Pegmont 2010	451,045	7,596,012	SC7	-60?	225	90	CR 076295 CR 066614	Drilled to test gossanous quartz veins surface rock chips up to 1.79ppm Au. Intersected altered dolerite/intrusive feldspathic rock, no significant intersections.
MRW003	Pegmont 2010	450,989	7,595,956	SC7	-60?	045	90	CR 076295 CR 066614	Scissor hole with MRW002. Intersected altered dolerite/intrusive feldspathic rock, no significant intersections, two gold anomalous zones 4-5m, 1m @ 0.28ppm Au and 63-64m, 1m @ 0.26ppm Au. 4m quartz pyrite vein recorded where target vein expected (note interval unknown as no logs provided).
MRW004	Pegmont 2010	450,969	7,595,935	SC7	-70?	045	90	CR 076295 CR 066614	Down dip test of MRW003. Intersected syenite? and silicified metasediments, no quartz pyrite vein intersected, no significant intersections, anomalous gold 62-63m, 1m @ 0.16ppm Au, Trace REEs recorded.

Table 3: Previous Drill holes – Mt Thomas Prospect

Hole ID	Company /Year	East AMG84	North AMG84	Prospect	Dip	Azimuth	Depth (m)	Reference	Comments
MTRC01	Placer 1996	450,250	7,592,400	Mt Thomas	-60	270	120	CR 028275	Intersected magnetic amphibolite and magnetite quartzite and mica schists, brecciated in part, no significant assays (gold assays only)
MTRC02	Placer 1996	450,300	7,593,197	Mt Thomas	-60	270	140	CR 028275	Intersected magnetic amphibolite and magnetite quartzite and mica schists, brecciated in part, no significant assays (gold assays only)
MTRC03	Placer 1996	450,492	7,593,200	Mt Thomas	-60	270	114	CR 028275	Intersected magnetic amphibolite and magnetite quartzite and mica schists, brecciated in part, no significant assays (gold assays only)
MTRC04	Placer 1996	450,600	7,593,200	Mt Thomas	-60	270	96	CR 028275	Intersected magnetic amphibolite and magnetite quartzite and mica schists, brecciated in part, no significant assays (gold assays only)
MTRC05	Placer 1996	450,960	7,593,600	Mt Thomas	-60	090	132	CR 028275	Intersected magnetic amphibolite and magnetite quartzite and mica schists, brecciated in part, no significant assays (gold assays only)
MTRC06	Placer 1996	450,260	7,593,600	Mt Thomas	-60	270	72	CR 028275	Intersected magnetic amphibolite and magnetite quartzite and mica schists, brecciated in part, no significant assays (gold assays only)
MTRC07	Placer 1996	450,190	7,591,500	Mt Thomas	-60	270	132	CR 028275	Intersected magnetic amphibolite and magnetite quartzite and mica schists, brecciated in part, no significant assays (gold assays only)
MTRC08	Placer 1996	450,153	7,591,500	Mt Thomas	-60	270	84	CR 028275	Intersected magnetic amphibolite and magnetite quartzite and mica schists, brecciated in part, no significant assays (gold assays only)
RP-035	Amoco/1978	450,208	7,592,148	Mt Thomas	-50	295	44	CR 030633, CR 006441	Intersected magnetite bearing schist, best intercept 18-21m, 3m @ 0.8ppm Au, 0.32% Cu, anomalous Cu from 16-33m (note sampled at 3m intervals) associated with felsic intrusive
RP-034	Amoco 1978	450,561	7,591,552	Mt Thomas	-50	295	51	CR 006441	Magnetite garnet mica schists, no significant assays
RP-033	Amoco 1978	450,385	7,591,069	Mt Thomas	-50	311	48	CR 006441	Magnetite quartz garnet schists, no significant assays
RP-032	Amoco 1978	451,019	7,591,087	Mt Thomas	-50	090	45	CR 006441	Muscovite quartz schists, trace magnetite, no significant assays

Hole ID	Company /Year	East AMG84	North AMG84	Prospect	Dip	Azimuth	Depth (m)	Reference	Comments
RP-031	Amoco 1978	450,941	7,591,388	Mt Thomas	-50	080	49	CR 006441	Muscovite quartz schists, minor magnetite, no significant assays
RP-030	Amoco 1978	450,897	7,591,376	Mt Thomas	-50	080	51	CR 006441	Muscovite, quartz magnetite garnet schists, 24-27m, 3m @ 0.22% Pb
RP-029	Amoco 1978	450,842	7,591,860	Mt Thomas	-50	086	51	CR 006441	Muscovite quartz schists, trace magnetite, anomalous Au 48-51m 3m @ 0.3ppm Au
RP-028	Amoco 1978	450,820	7,592,251	Mt Thomas	-50	071	48	CR 006441	Muscovite quartz schist, anomalous Zn and detectable Au 18-21m, magnetite and garnet present from 21m, trace pyrite
RP-027	Amoco 1978	450,786	7,592,237	Mt Thomas	-50	071	51	CR 006441	Muscovite, quartz magnetite garnet schists, no significant assays
RP-026	Amoco 1978	450,737	7,592,247	Mt Thomas	-50	115	51	CR 006441	Muscovite, quartz garnet schists, trace magnetite, 42m to 45m, 3m @ 0.26% Pb, 0.2ppm Au
RP-025	Amoco 1978	450,697	7,592,255	Mt Thomas	-50	115	42	CR 006441	Muscovite, quartz biotite garnet schists, magnetite present from 30m, no significant assays
RP-024	Amoco 1978	450,761	7,592,514	Mt Thomas	-50	115	51	CR 006441	Muscovite, quartz biotite schists, no significant assays